

Barnsley Cold Weather Plan 2023-24

Julie Tolhurst - Public Health Principal

Jen Macphail- Senior Public Health Officer

The direct and indirect effects of cold weather



Exposure to cold weather can affect your health in different ways, even at temperatures as mild as 4 to 8 °C

Direct effects



- **heart attack**
- **stroke**
- **increased risk** of respiratory disease
- **weakened lung function** causing an increased risk of influenza
- **falls** and injuries
- **hypothermia**

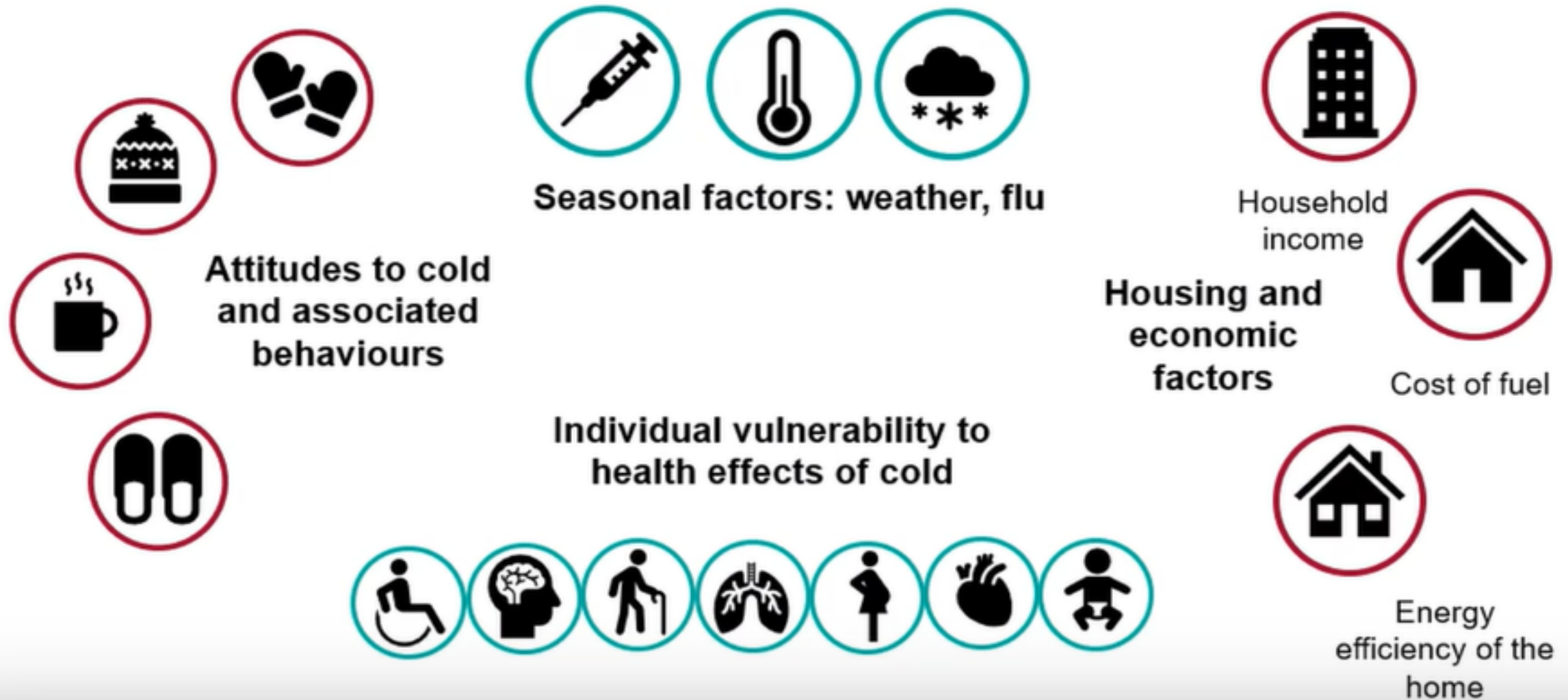
Indirect effects



- **disruption to healthcare services** caused by snow and ice
- **carbon monoxide** poisoning
- **poorer mental health** and reduced educational and employment attainment have been linked to cold homes and fuel poverty



Who is affected by the cold and why?



Barnsley response

[Stay well this winter](#)

Key information and advice about support available locally. Paper and online versions. Easy read and poster in the pipeline.

Keep Warm and Well
2023-24

Keep warm, stay well



Welcome to Barnsley's guide to keeping warm and well for winter. Anyone can become unwell if they get too cold, especially if you're under five, over 65, pregnant, or have a long-term health condition. This booklet is full of top tips and information on ways to make sure you, your friends and family can cope with cold weather this winter.

We know this winter will be difficult financially for a lot of people. Search 'more money in your pocket' on the council website for local support:

barnsley.gov.uk/MMIYP

MORE MONEY IN YOUR POCKET

For more information, go to our website:



[Cold weather plan](#)

multi-agency partnership approach to addressing the causes of cold related mortality and morbidity with links to support available over the winter months

BARNSELY Metropolitan Borough Council


Search (eg Council Tax) A to Z Accessibility statement Translate Alerts

Our council

Home > Services > Our council > Our strategies > Barnsley cold weather plan 2022/23

OUR STRATEGIES

Barnsley's 2022/23 plan to reduce excess winter deaths



Introduction

The 2022/23 cold weather plan outlines our strategic objectives to reduce excess winter deaths. It has been produced collaboratively with partners and aligned to the [Barnsley 2030](#) outcomes and the [Health and Wellbeing Strategy](#).

Reducing cold-related harm in our communities is a complex issue. For this plan to be successful, keeping warm and well needs to be everyone's priority over the colder months.

This plan emphasises early intervention and prevention, and ensures we focus our efforts working alongside residents most at risk of their health and wellbeing being affected this winter. This is particularly important so that residents can still access health and care support during winter when there is higher demand.

This year's plan will contribute to tackling the cost-of-living crisis faced by residents, driven by the rising cost of energy. The plan has been co-produced with members of the Collaborative Cold Weather Planning Group. This group has the responsibility of co-ordinating local action in advance of the winter to:

- Reduce cold related morbidity and mortality in Barnsley
- Reduce Barnsley's excess winter death (EWD) levels
- Play a key role in Barnsley's response to COVID-19 and flu

Find out more...

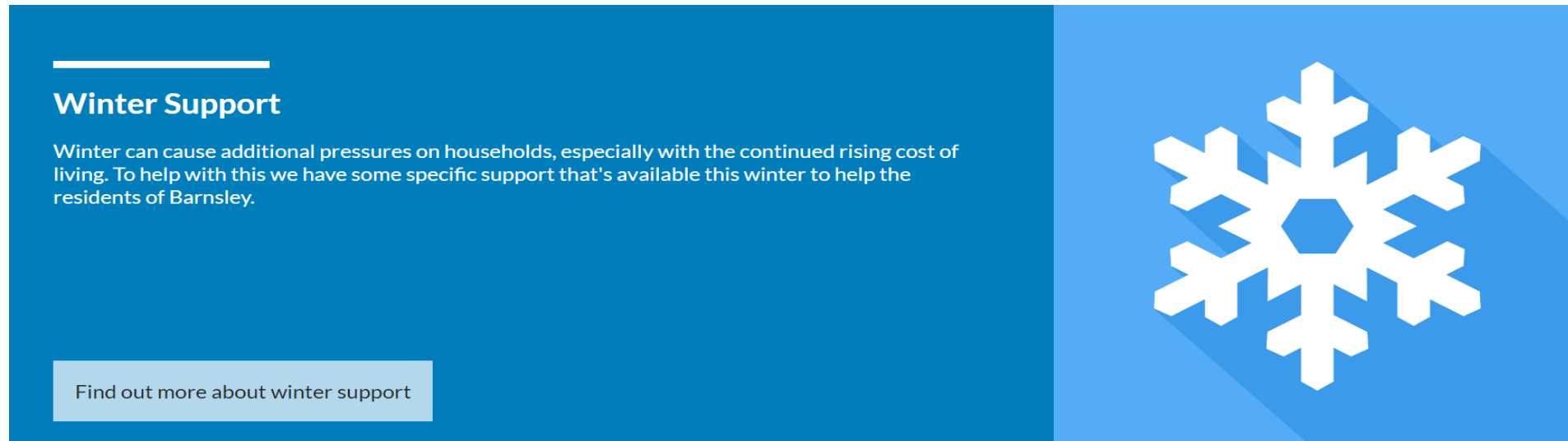
- > Key strategies
- > Supporting strategies and policies
- > Adult social care
- > Barnsley 2030

**20
30**

**Barnsley – the place
of possibilities.**

**Healthy
Barnsley**

Winter Support Available



Winter Support

Winter can cause additional pressures on households, especially with the continued rising cost of living. To help with this we have some specific support that's available this winter to help the residents of Barnsley.

Find out more about winter support

<https://www.barnsley.gov.uk/services/advice-benefits-and-council-tax/help-with-the-rising-cost-of-living/winter-support/>

Specific page for winter support available across the borough - includes links to Welcoming Spaces, Stay Well this Winter and the Warm Homes team, along with how to access support from the government.

**20
30**

**Barnsley – the place
of possibilities.**

**Healthy
Barnsley**

New National Adverse Weather and Health Plan

[Adverse Weather and Health Plan - GOV.UK \(www.gov.uk\)](https://www.gov.uk) –
Published 27 April 2023.

- [Hot weather and health guidance](#)
- [Cold weather guidance](#) – launched 7 September 2023
- [Supporting Evidence](#)
- [AWHP Launch](#) & [Summer Prep webinars](#)



**20
30**

Barnsley – the place
of possibilities.

**Healthy
Barnsley**

Recommendations

Health and Wellbeing Board members are asked to:-

- Note the content of 2023-2024 plan and recognise the work delivered to date to address winter mortality and cold related ill health in Barnsley
- Raise awareness of current guidance and support locally to address cold related ill health this winter and beyond
- Support a review of the plan going forward into 2024, aligned to the UKHSA Adverse Weather & Health Plan



Barnsley – the place
of possibilities.

Healthy
Barnsley